

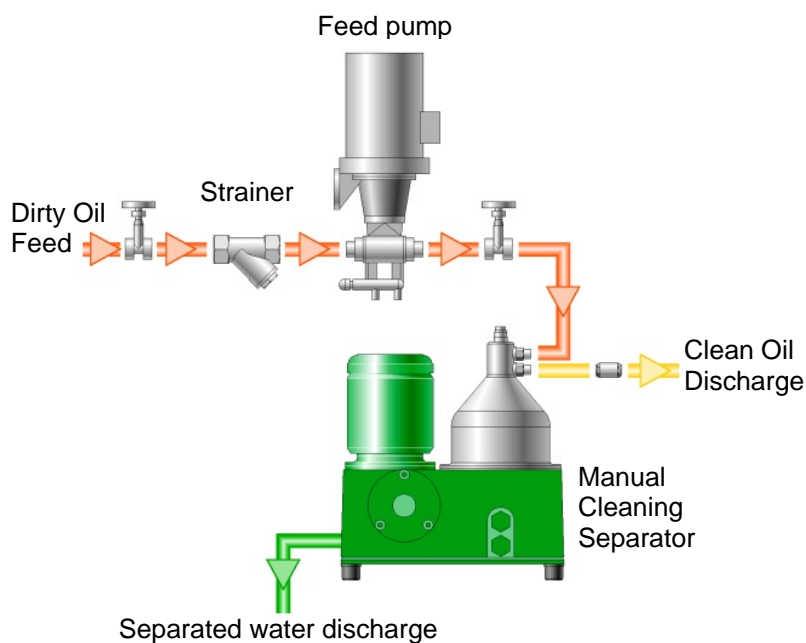


OTC manual cleaning separator

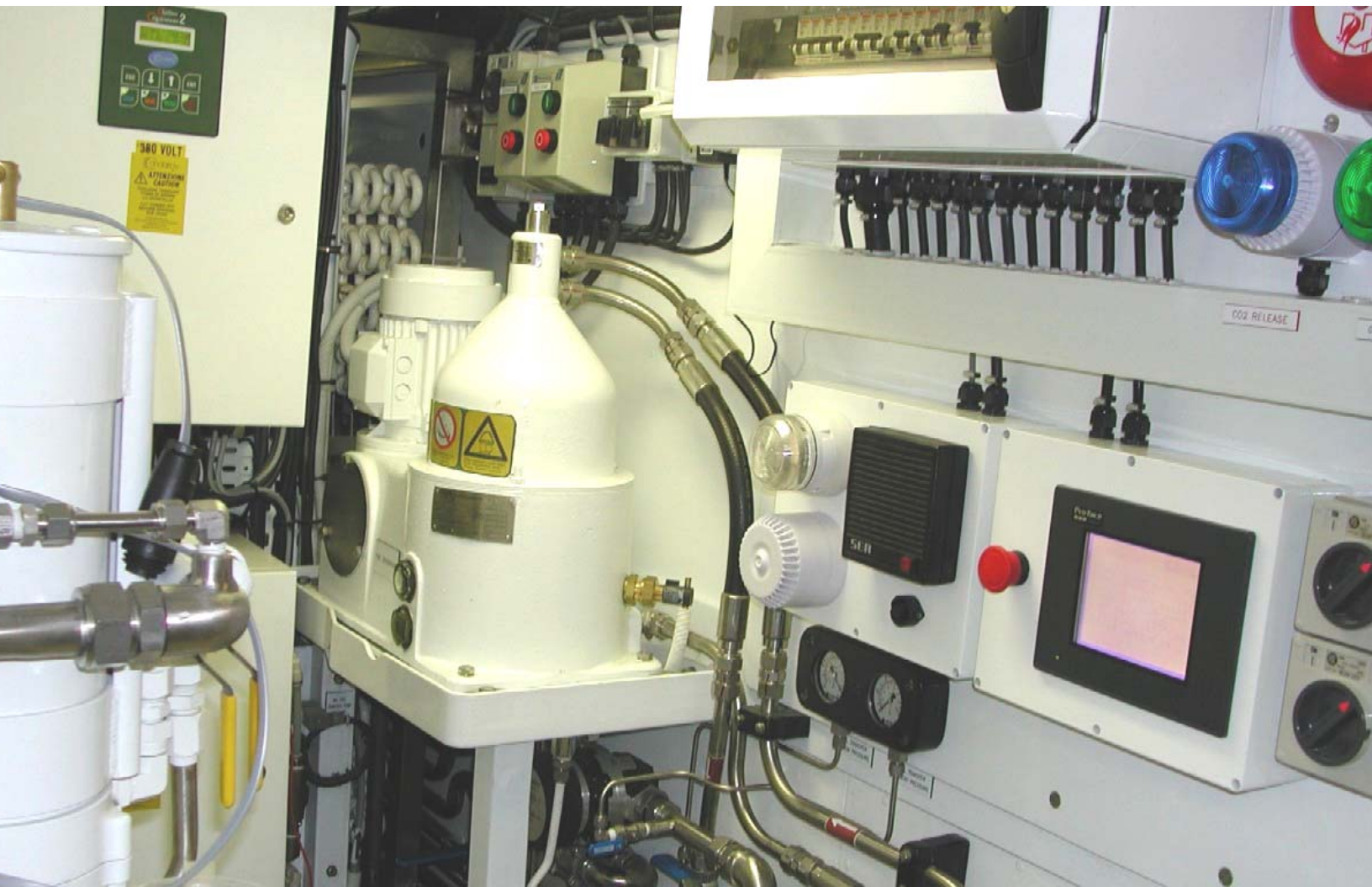
Centrifugal fuel purifier
from GEA Westfalia Separator

designed for
Yachts, Work Boats, Ferries, Patrol Boats etc.



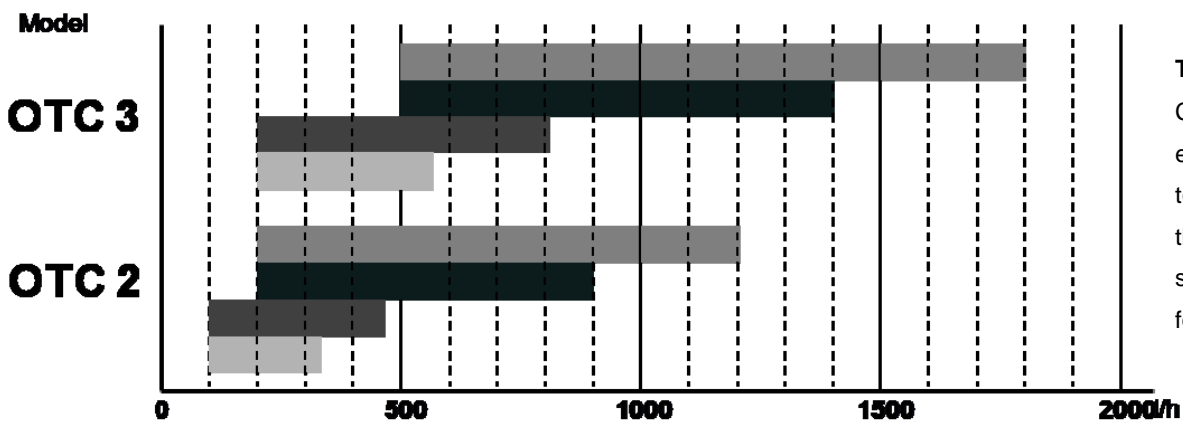


The centrifugal feed pump sucks directly from the bucket tank and feeds the centrifugal separator continuously with fuel oil. The separator is equipped with a disk type bowl to clarify liquids or to separate liquid mixtures. A liquid seal in the separator bowl prevents the oil from escaping through the water outlet. The product flows through the product inlet into the rotating bowl and is clarified or separated in the disk stack. The separated heavy liquid phase runs freely outwards over the separating disk out of the bowl. The purified, light phase is discharged internally through the centripetal pump under pressure. The centrifuged solids do collect in the solids holding space and must be removed manually.



The OTC 2 & 3 series protects against expensive damage to engine components. The water content in the fuel or lubrication oil is reduced down to product specification values of <math><0.03\%</math>. The separated fuel and lubrication oil is practically free of sediment contamination down to 3 microns. The salt content in fuel oils is efficiently reduced. The separator of enclosed design is equipped with a level sight glass. The hood is removable. The machine is driven by a three-phase AC motor. Power is transferred to the bowl spindle via flat belt. All bearings are splash-lubricated from a central oil bath.

The OTC series is available as skid mounted unit ready for very easy and fast plug & play installation or also as a loose standalone unit ideal for very tight and space restricted engine rooms and REFITS into the smallest corners. The OTC series is a superior compact and lightweight equipment which can be installed and commissioned/operated without any specialized OEM technicians.



Throughput capacity
Capacity range from economical efficiency up to maximum technical throughput with 100% separation performance for all indicated products.

Fuel specification regarding CIMAC or ISO 8217:

- Marine Gas Oil $\leq 7,5\text{cSt}$ at 40°C and separating temperature recommended at 20°C
- Marine Diesel Oil $\leq 15\text{cSt}$ at 40°C and separating temperature recommended at 40°C
- mild alkaline type Lubricating Oil at separating temperature of 90°C
- detergent type Lubricating Oil at separating temperature of 95°C

Benefits of the Westfalia the new generation OTC separator system

- **Low and easy maintenance**
 - Complete technical documentation
 - Belt drive instead of gear drive
 - Less bowl parts
- **Low space requirement**
 - Compact design with belt drive
 - Modular design
- **Light weight**
 - Aluminium hood instead of steel
 - Aluminium frame instead of grey cast iron
 - Belt drive instead of gear drive
- **Low noise level because**
 - Rubber cushions
 - Less vibrations
 - Belt drive
- **Cost saving**
 - No change and disposal of expensive filter elements
 - Reduced wear and tear on engine components
 - Extended oil change intervals
- **Standard equipment:**
 - Three-phase AC motor
 - Rubber cushions
 - Motor protection switch
 - Set of commissioning parts & tools
 - Set of regulating rings
 - Set of bowl inlay (sludge liner)
 - Set of hoses for feed & discharge
 - Filling water hopper
 - Flow detector & indicator
 - Feed pump
 - Control for separator & feed pump

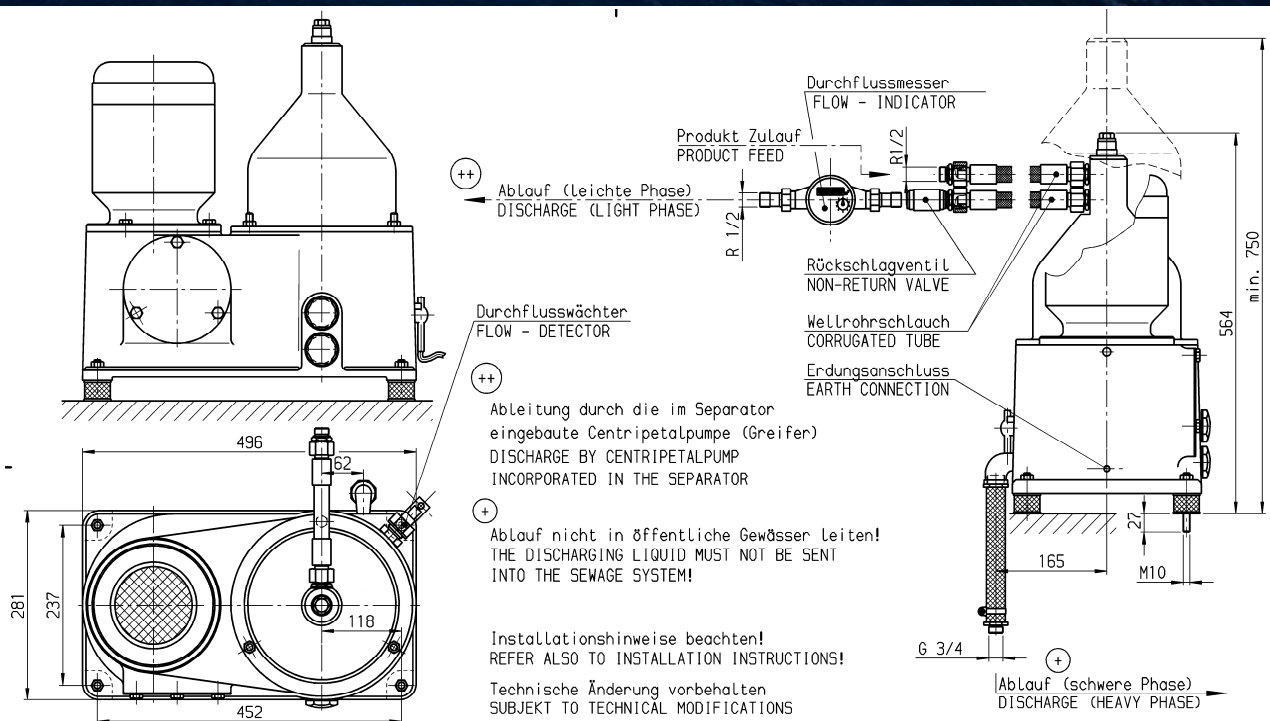
(additional optional equipment)

 - Heater system
 - Set of spare parts
 - Conversion set for clarifier
- The OTC separator and all periphery equipment can be delivered in white painting and polished stainless steel hood so that it also fits visually in your engine room
- **Continuous operation** and light phase discharge under pressure and therefore no need for additional pump
- **Less wear, abrasion and erosion** because all product-contact parts are made of stainless steel
- **Easy conversion into clarifier**
 - Less parts
 - Easy conversion kit
- **Easy installation**
 - Plug & Play with Compact Unit design
 - Flexible line connections
 - Complete technical documentation
- **Easy maintenance, operation and manual cleaning**
 - Less parts and less tools required
 - Complete technical documentation
 - Spare part kits for one or two years
 - Service intervals up to 16,000h or 2 years
 - Belt drive instead of gear drive
 - Unmanned operation
- **Complete technical documentation**
 - Installation and cleaning Manual
 - Maintenance and spare parts list
 - Instruction manual
 - Piping & Installation drawings
 - Dimension drawings
- **Worldwide service support** with fully equipped repair and service center plus spare parts stock and service engineers in Melbourne and throughout Australia

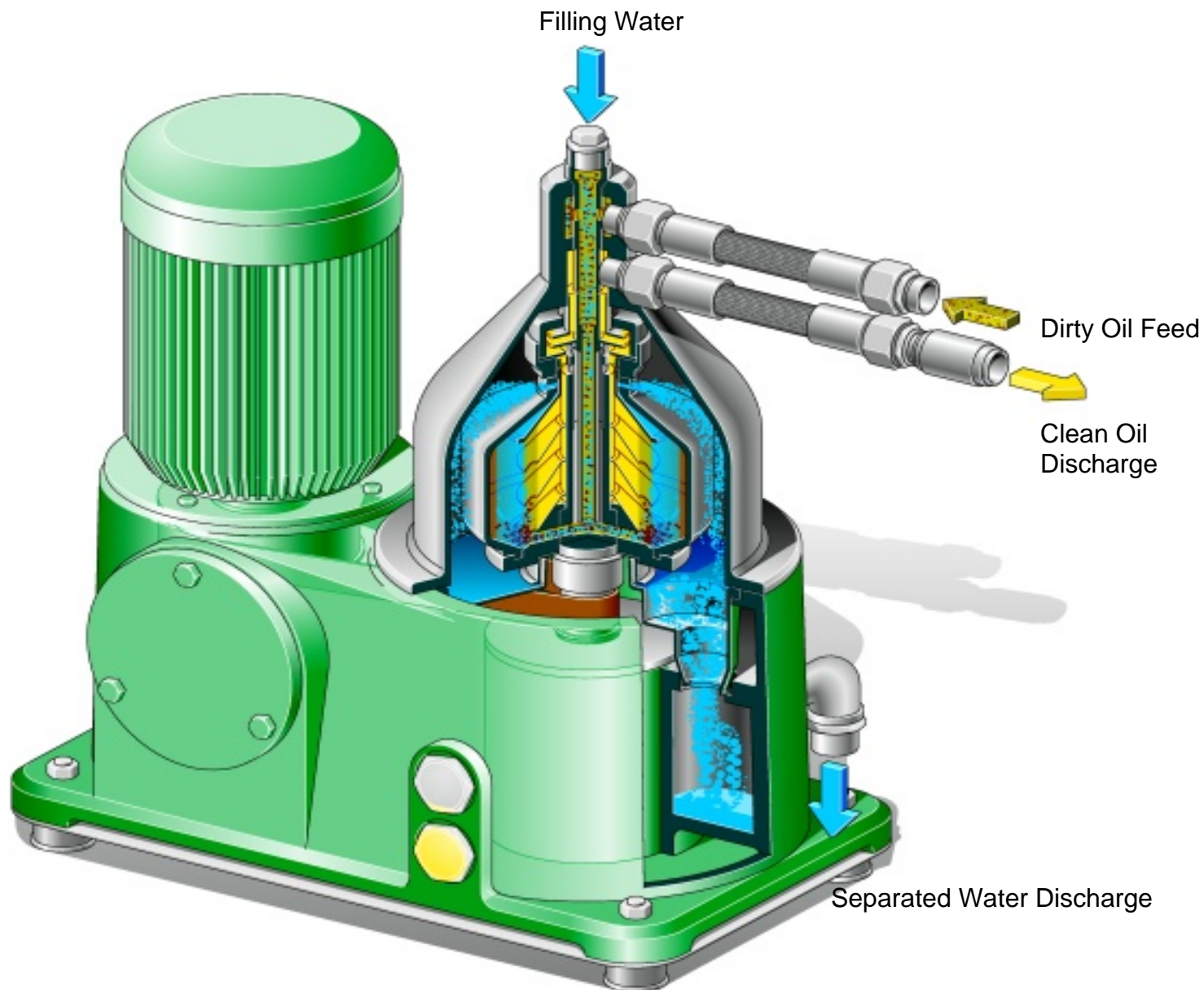


Technical data	OTC2	OTC3
Bowl		
Speed	10 000 rpm	10 000 rpm
Bowl volume	1.2 l	2.2 l
Solids holding space	0.75 l	1.2 l
Three-phase AC motor		
Power	1.1 kW	1.1 kW
Normal absorbed power	0.6 kW	0.8 kW
Design		IM V1
Enclosure		IP 55
Also available motor for		
operating Voltage	440 V 50/60Hz	3 phase
operating Voltage	230 V	1 phase
Drive System Belt Drive (endless belt)		
Skid mounted	preassembled skid	
All Classification Society Certificates available		

	OTC2	OTC3
Centripetal pump		
Pressure head, HD of the light liquid phase	0.5 bar	1.0 bar
Connections		
Feed	R ½ in	
Discharge heavy phase	R ¾ in	
Discharge light phase	R ½ in	
Max. separating temperature	100 °C	212 °F
Rated capacity up to	1400 l/h	2200 l/h
Weight Separator complete	60 kg	65 Kg
(low-weight silumin version)	40 kg	45 kg
Case dimensions (LxWxH)	640x640x710 mm	
Gear Feed Pump		
Suction height	- 0.5 bar	
Pressure head	3 bar	



Take the BEST - Separate the REST



Contact GEA Westfalia Separator Australia:

Sascha Wieking

Business Development Manager

GEA Westfalia Separator Australia P/L

47 Northgate Drive

Thomastown, Victoria 3074

Phone: 03 9463 1999

Fax: 03 9464 5455

Mobile: 0419 906 382

Email: wieking.sascha@gea-westfalia.com.au

Web: www.gea-westfalia.com

